

£3,000 Per Month
Pear Tree Lane, Teversall Villiage,

Welcome to **BuckleyBrown**, where every home is carefully presented, so you can explore with clarity and confidence.

BuckleyBrown
ESTATE AGENTS

"A truly stunning new build residence, discreetly tucked away in the peaceful setting of Terversal, offering an exceptional blend of contemporary design and countryside charm. Finished to an outstanding specification throughout, this beautifully crafted home delivers spacious and versatile accommodation, thoughtfully designed for modern family living."

Hollie Carter, Associate Lettings Director



Designed to suit modern lifestyles

This impressive 5-bedroom new build detached home is beautifully presented throughout and finished to an excellent standard, offering spacious, ready-to-move-into accommodation perfectly suited to modern family living.

Standing proudly in an attractive position, the property combines contemporary design with high-quality fixtures and fittings throughout. Thoughtfully designed to provide both style and practicality, the home features bright and generously proportioned living spaces with a superb flow ideal for everyday living and entertaining alike.

The stunning open-plan kitchen and family area forms the heart of the home, complemented by elegant reception rooms and well-appointed bedrooms, all finished with a modern and luxurious touch. Externally, the property benefits from ample off-road parking, a garage, and well-maintained gardens, creating an inviting and private outdoor space.

This exceptional home offers the perfect blend of comfort, quality, and contemporary living, making it an ideal purchase for growing families seeking a premium new build property.



Step Inside

The welcoming entrance hall leads to a superb open-plan kitchen and dining space fitted with high-quality integrated appliances, quartz worktops and stylish finishes, creating the perfect heart of the home for entertaining and everyday living. A spacious dual-aspect lounge with large sliding doors opens onto the rear garden, allowing an abundance of natural light to flow through the property, whilst a separate study provides an ideal space for home working.

Arranged over the upper floors are five generously sized double bedrooms, including an impressive principal bedroom with dressing area and en-suite shower room. The home further benefits from a beautifully appointed family bathroom and additional shower room, all finished with contemporary Porcelanosa fittings.

Externally, the property boasts a large double garage, ample off-road parking and landscaped gardens with an extensive sandstone patio, perfectly positioned to enjoy the idyllic surroundings and far-reaching countryside views.

Finished with high specification fixtures and fittings throughout, including underfloor heating to all floors via an energy-efficient air source heat pump, this superb family home offers a rare opportunity to acquire a premium new build property within the highly desirable village of Teversal.



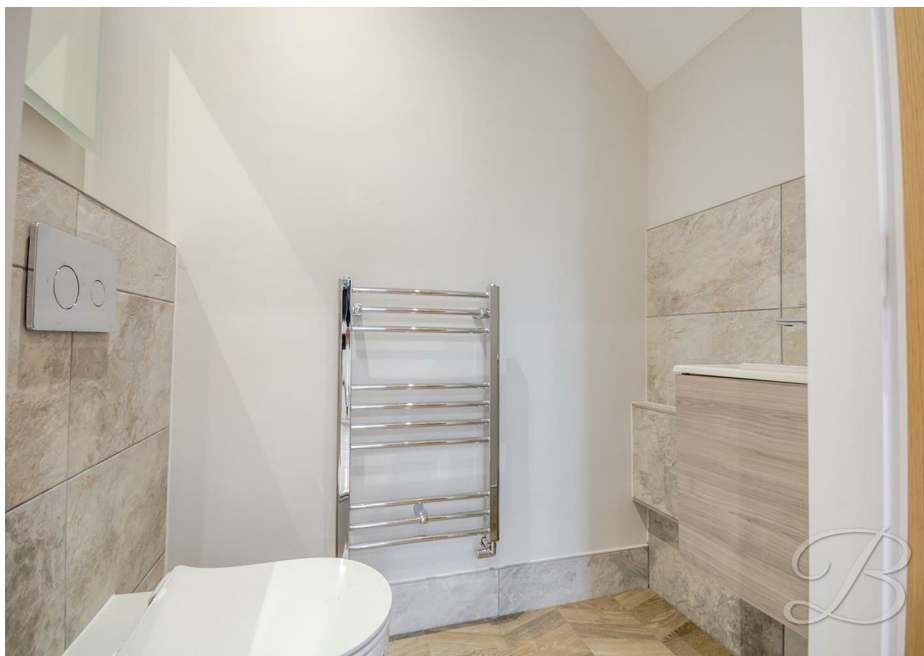


BuckleyBrown
ESTATE AGENTS





B



Life in Teversal..

Life in Teversal offers the perfect balance between peaceful countryside living and modern day convenience. Steeped in history and surrounded by beautiful open landscapes, this charming Nottinghamshire village is highly regarded for its rural character, scenic walks and strong sense of community.

Residents can enjoy direct access to a wealth of outdoor pursuits including the popular Teversal Trails and Silverhill Woods Country Park, offering miles of walking, cycling and running routes with panoramic countryside views stretching across Nottinghamshire and beyond. The area is especially popular with nature lovers and outdoor enthusiasts who appreciate the peaceful surroundings and scenic beauty throughout the seasons.





Whilst every attempt has been made to ensure the accuracy of the floor plan contained here, no responsibility is taken for incorrect measurements of doors, windows, appliances and room or any error, omission or misstatement. Exterior and interior walls are drawn to scale based on interior measurements. Any figure given is for initial guidance only and should not be relied on as basis of valuation. These plans are for marketing purposes only and should be used as such by any prospective purchase. Specially no guarantee is should not be relied on as a basis of valuation. These plans are for marketing purposes only and should be used as such by any prospective purchase. Specifically no guarantee is given on the total square footage of the property if quoted on this plan.

Key Features

- Spacious dual-aspect lounge with sliding doors to the rear garden

- Five generously sized double bedrooms

- Underfloor heating throughout

High-specification finish throughout

Large double garage

Size

Approximately 2,237.98 sq ft

Council Tax Band:

E

Energy Performance Rating:

B

BuckleyBrown
ESTATE AGENTS



These particulars are intended as a guide only and do not form part of any offer or contract. All descriptions, measurements, images and plans are provided for illustration purposes and should not be relied upon as statements of fact. Prospective purchasers should satisfy themselves as to the accuracy of the information. Buckley Brown Estate Agents accept no liability for any loss arising from reliance on these details.

© Buckley Brown Estate Agents 2026. All rights reserved.

Exceptional homes deserve
exceptional representation.

Let's Chat.

01623 633633

mansfield@buckleybrown.co.uk

buckleybrown.co.uk

BuckleyBrown
ESTATE AGENTS